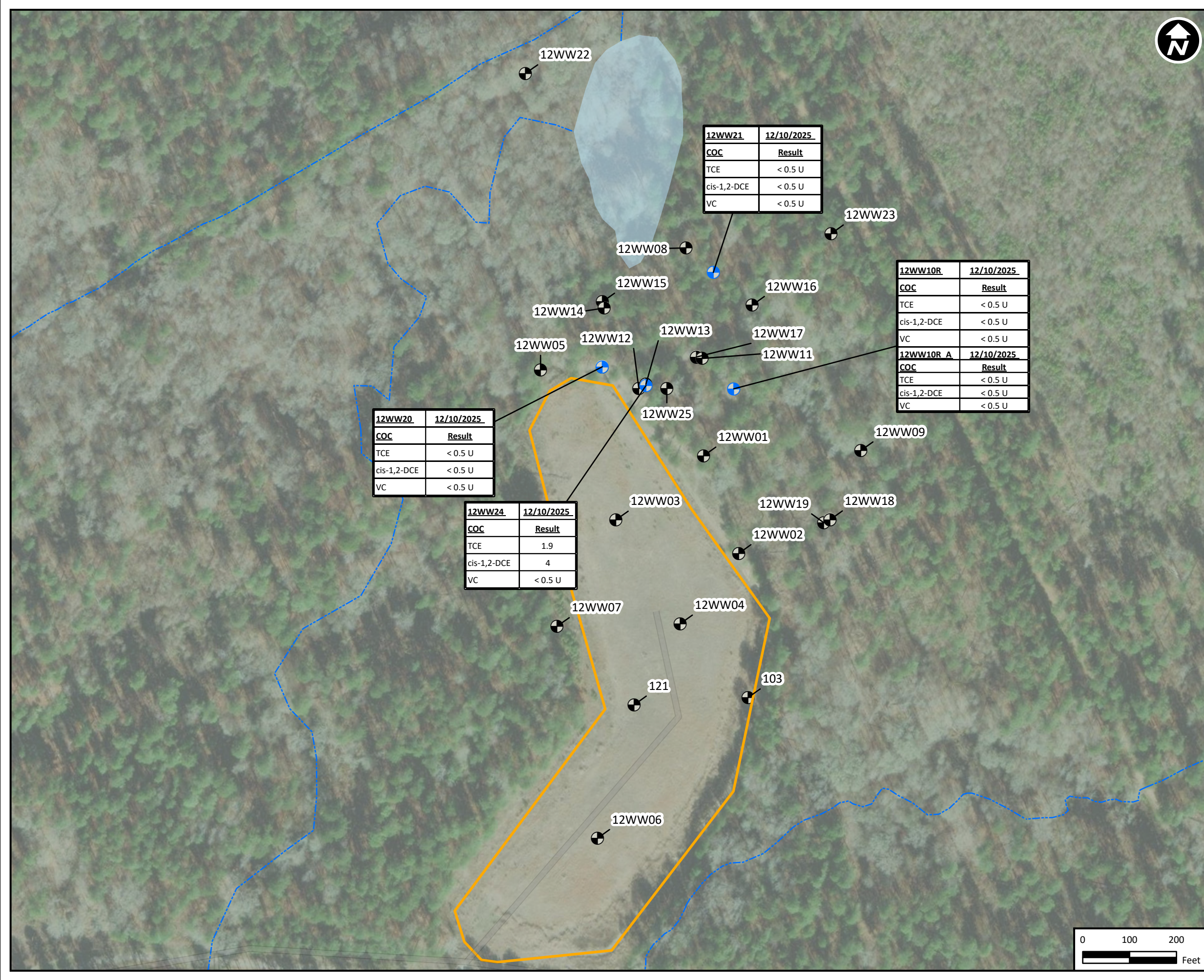


C:\Users\graham.washburn\GIS_local\Longhorn\Longhorn_Files\001_LHAAP04_2025RAO\001_LHAAP-aprx 3/2/2026_graham.washburn



Legend:

- Monitoring Well Location (COCs analyzed)
- Monitoring Well Location (COCs not analyzed)
- Stream
- Lakes
- ▭ Site Boundary
- ▭ Installation Boundary

COCs shown on this figure	
COC	MCL
TCE	5
cis-1,2-DCE	70
VC	2

Note:

U = Result is less than the laboratory detection limit
 COC = Contaminant of Concern
 USEPA = United States Environmental Protection Agency
 MCL = Maximum Contaminant Limit
 DCE = Dichloroethene
 VC = Vinyl Chloride
 TCE = Trichloroethene

All results and MCLs are reported in micrograms per liter (µg/L)

This information is depicted to provide visual aid within the context of this document and should not be used as a sole reference in precise dimensioning of features indicated.



2025 Annual Remedial Action Operation Report
 LHAAP-12 Landfill 12
 Longhorn Army Ammunition Plant
 Karnack, Texas

**Groundwater COC Concentrations
 December 2025**

Figure 5

