

- ◆ Shallow Monitoring Well
 - Shallow/Intermediate Monitoring Well
 - Surface Water Sample Location
 - Shallow Zone TCE Plume (Dashed where inferred)
 - Shallow Zone cis-1,2 DCE Plume (Dashed where inferred)
 - Shallow Zone VC Plume (Dashed where inferred)
 - Former Railroad Location
 - Culvert
 - ▭ Surveyed Land Use Control Boundary
 - Stream
 - Roads
 - ▭ Former Buildings
 - ▭ LHAAP-46 Site Boundary
- Note:
1. MCL - Maximum Contaminant Level
 2. RA-O = Remedial Action Operations
 3. LHAAP = Longhorn Army Ammunition Plant
 4. Shaded concentrations exceed MCL

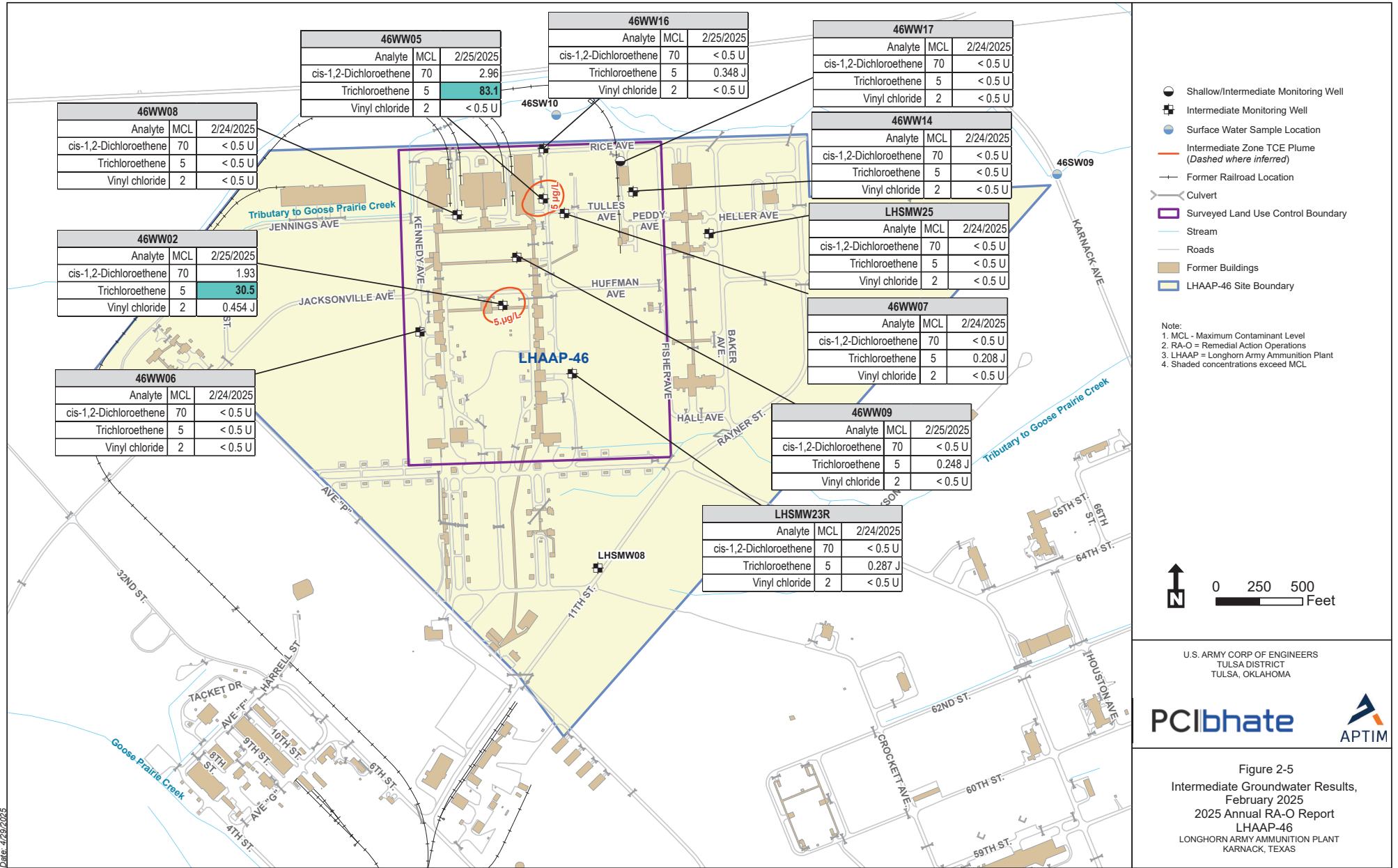


U.S. ARMY CORP OF ENGINEERS
TULSA DISTRICT
TULSA, OKLAHOMA



Figure 2-4
Shallow Groundwater Results,
February 2025
2025 Annual RA-O Report
LHAAP-46
LONGHORN ARMY AMMUNITION PLANT
KARNACK, TEXAS

Date: 6/17/2025



46WW08			
Analyte	MCL	2/24/2025	
cis-1,2-Dichloroethene	70	< 0.5 U	
Trichloroethene	5	< 0.5 U	
Vinyl chloride	2	< 0.5 U	

46WW02			
Analyte	MCL	2/25/2025	
cis-1,2-Dichloroethene	70	1.93	
Trichloroethene	5	30.5	
Vinyl chloride	2	0.454 J	

46WW06			
Analyte	MCL	2/24/2025	
cis-1,2-Dichloroethene	70	< 0.5 U	
Trichloroethene	5	< 0.5 U	
Vinyl chloride	2	< 0.5 U	

46WW05			
Analyte	MCL	2/25/2025	
cis-1,2-Dichloroethene	70	2.96	
Trichloroethene	5	83.1	
Vinyl chloride	2	< 0.5 U	

46WW16			
Analyte	MCL	2/25/2025	
cis-1,2-Dichloroethene	70	< 0.5 U	
Trichloroethene	5	0.348 J	
Vinyl chloride	2	< 0.5 U	

46WW17			
Analyte	MCL	2/24/2025	
cis-1,2-Dichloroethene	70	< 0.5 U	
Trichloroethene	5	< 0.5 U	
Vinyl chloride	2	< 0.5 U	

46WW14			
Analyte	MCL	2/24/2025	
cis-1,2-Dichloroethene	70	< 0.5 U	
Trichloroethene	5	< 0.5 U	
Vinyl chloride	2	< 0.5 U	

LHSMW25			
Analyte	MCL	2/24/2025	
cis-1,2-Dichloroethene	70	< 0.5 U	
Trichloroethene	5	< 0.5 U	
Vinyl chloride	2	< 0.5 U	

46WW07			
Analyte	MCL	2/24/2025	
cis-1,2-Dichloroethene	70	< 0.5 U	
Trichloroethene	5	0.208 J	
Vinyl chloride	2	< 0.5 U	

46WW09			
Analyte	MCL	2/25/2025	
cis-1,2-Dichloroethene	70	< 0.5 U	
Trichloroethene	5	0.248 J	
Vinyl chloride	2	< 0.5 U	

LHSMW23R			
Analyte	MCL	2/24/2025	
cis-1,2-Dichloroethene	70	< 0.5 U	
Trichloroethene	5	0.287 J	
Vinyl chloride	2	< 0.5 U	

- Shallow/Intermediate Monitoring Well
- Intermediate Monitoring Well
- Surface Water Sample Location
- Intermediate Zone TCE Plume (Dashed where inferred)
- Former Railroad Location
- Culvert
- Surveyed Land Use Control Boundary
- Stream
- Roads
- Former Buildings
- LHAAP-46 Site Boundary

Note:
 1. MCL - Maximum Contaminant Level
 2. RA-O = Remedial Action Operations
 3. LHAAP = Longhorn Army Ammunition Plant
 4. Shaded concentrations exceed MCL



U.S. ARMY CORP OF ENGINEERS
 TULSA DISTRICT
 TULSA, OKLAHOMA

PCibhate

Figure 2-5
 Intermediate Groundwater Results,
 February 2025
 2025 Annual RA-O Report
 LHAAP-46
 LONGHORN ARMY AMMUNITION PLANT
 KARNACK, TEXAS